



KING'S ACADEMY COLLEGE PARK



Golden Tea and Lunch



Children in the Infant School will be selected for the most progress in their reading at home, and to celebrate this, will have 'Golden Tea and Lunch' with Mrs Richardson.




Attendance News

Our school target for attendance is 96%
The classes that hit the target last week were:

RS- 97% RF- 96.7%
1E 96.9%
2F- 97.4% 2Z- 96%
4HT- 98.2%
5KM- 96.3% 5HW- 97%
6BT- 96.6%
Well done!

UPCOMING EVENTS

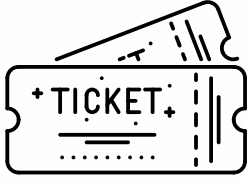
| | |
|----------------------|---------------------------------------------------------------------------------------------------------------------------------------------------------------------------------------------------------------------------------------|
| Monday 18th March | U10 Girl's Football Festival  |
| Tuesday 19th March | Year 2 Marwell Zoo Trip  |
| Wednesday 20th March | Year R Staunton Country Park  |
| Thursday 21st March | Year 1 Infant Voices Rehearsal and Evening Performance |
| Friday 22nd March | Year 5 Portsdown Hill Trip Year 2 Exhibition 2.30pm   |

"THIS MORNING, HE HAD A RUNNY NOSE... BUT LOOK AT HIM NOW!"



MOMENTS MATTER, ATTENDANCE COUNTS.

Parents who have bought tickets to the Infant Voices performance at the Portsmouth Guildhall will receive them this week. There is also more information that will be shared today.



DON'T FORGET TO VISIT OUR WEBSITE FOR THE MOST UP TO DATE INFORMATION!

[Take me there!](#)



Follow -US-



Message from Mrs Carlyle

Dear Parents and Carers,

It was so lovely to see all the red noses on Friday and thank you so much for all the donations to our local Pantry. It was a busy week of Science, Year 5 on a science trip to the UTC. Year 1 and Year 2 also had a Science trip to Copnor School. We are looking forward to more school trips this week too.



Take care,
Mrs Carlyle



Next week we will be celebrating 'World Religion Day' in our assemblies.

This week we will be focusing on World Religion



We are constantly working on improving our website so that it contains all the information you need!

Our Year Group Pages are currently being updated to include termly homework, weekly spellings and the Autumn Term newsletter.

Click [here](#) to select your year group's page!

WEBSITE UPDATES



Please could you send your child into school with a breaktime snack (that is nut free!). Recently, we have had a number of junior children coming to the office hungry because they don't have a snack.



At National Online Safety, we believe in empowering parents, carers and trusted adults with the information to hold an informed conversation about online safety with their children, should they feel it is needed. This guide focuses on one of many apps that we believe trusted adults should be aware of. Please visit www.nationalonlinesafety.com for further guides, hints and tips for adults.

What Parents & Carers Need to Know about YOUTUBE

YouTube is a video-sharing social media platform that allows billions of people around the world to watch, share and upload their own videos with a vast range of content – including sport, entertainment, education and lots more. It's a superb space for people to consume content that they're interested in. As a result, this astronomically popular platform has had a huge social impact: influencing online culture on a global scale and creating new celebrities.

INAPPROPRIATE CONTENT

YouTube is free and can be accessed via numerous devices, even without creating a YouTube account. Some content is flagged as 'age-restricted' (requiring the user to be logged into an account with a verified age of 18), but children can still view some mildly inappropriate material. This can include profanity and violence, which some young users may find upsetting.

HIGH VISIBILITY

Content creators can also be put at risk – especially young ones who try to make their online presence as visible as possible. Creating and uploading content exposes children to potential harassment and toxicity from the comments section, along with the possibility of direct messaging from strangers. Videos posted publicly can be watched by anyone in the world.

CONNECT WITH STRANGERS

YouTube is a social media platform, which allows people to interact with other (usually unknown) users. Account holders can leave comments on any video they have access to, as well as messaging other users directly. Connecting with strangers online, of course, can potentially lead to children being exposed to adult language, to cyberbullying and even to encountering online predators.

TRENDS AND CHALLENGES

YouTube is teeming with trends, challenges and memes that are fun to watch and join in with. Children often find these immensely entertaining and might want to try them out. Most challenges tend to be safe, but many others may harm children through either watching or copying. The painful 'salt and ice challenge', which can cause injuries very quickly, is just one of many such examples.

SUGGESTED CONTENT

YouTube recommends videos related to what the user has previously watched on their account, aiming to provide content that will interest them. This is intended to be helpful but can also lead to binge-watching and the risk of screen addiction, especially if 'auto-play' is activated. Users without an account are shown popular videos from the last 24 hours, which might not always be suitable for children.

SNEAKY SCAMMERS

Popular YouTube channels regularly have scammers posing as a well-known influencer in the comments section, attempting to lure users into clicking on their phishing links. Scammers impersonate YouTubers by adopting their names and profile images, and sometimes offer cash gifts or 'get rich quick' schemes. Children may not realise that these users are not who they claim to be.

Advice for Parents & Carers

APPLY RESTRICTED MODE

Restricted Mode is an optional setting that prevents YouTube from showing inappropriate content (such as drug and alcohol abuse, graphic violence and sexual situations) to underage viewers. To prevent your child from chancing across age-inappropriate content on the platform, we would recommend enabling Restricted Mode on each device that your child uses to access YouTube.

TRY GOOGLE FAMILY

Creating a Google Family account allows you to monitor what your child is watching, uploading and sharing with other users. It will also display their recently watched videos, searches and recommended videos. In general, a Google Family account gives you an oversight of how your child is using sites like YouTube and helps you ensure they are only accessing appropriate content.

CHECK PRIVACY SETTINGS

YouTube gives users the option of uploading videos as 'private' or 'unlisted' – so they could be shared exclusively with family and friends, for example. Comments on videos can also be disabled and channels that your child is subscribed to can be hidden. If your child is only uploading videos that are protected as 'private', they are far less likely to receive direct messages from strangers.

CHECK OTHER PLATFORMS

Influential content creators usually have other social media accounts which they encourage their fans to follow. Having an open discussion about this with your child makes it easier to find out how else they might be following a particular creator online. It also opens up avenues for you to check out that creator's other channels to see what type of content your child is being exposed to.

MONITOR ENGAGEMENT

YouTube is the online viewing platform of choice for billions of people, many of them children. Younger children will watch different content to older ones, of course, and react to content differently. You may want to keep an eye on how your child interacts with content on YouTube – and, if applicable, with content creators – to understand the types of videos they are interested in.

LIMIT SPENDING

Although YouTube is free, it does offer some in-app purchases: users can rent and buy TV shows and movies to watch, for example. If you're not comfortable with your child purchasing content online, limit their access to your bank cards and online payment methods. Many parents have discovered to their cost that a child happily devouring a paid-for series quickly leads to an unexpected bill!

Meet Our Expert

Clare Godwin (a.k.a. Lunawolf) has worked as an editor and journalist in the gaming industry since 2015, providing websites with event coverage, reviews and gaming guides. She is the owner of Lunawolf Gaming and is currently working on various gaming-related projects including game development and writing non-fiction books.

PNSC SWIMMING CLUB TRIALS



Would you like to join Portsmouth's leading swimming club?

To book a trial with us contact: admin@pnscl.org.uk

For more information visit: www.pnscl.org.uk



Learn to Swim

For children of 3 years and up, we offer a fun filled Learn to Swim programme, giving children the right skills to be fit, healthy and safe in the water. Developing the confidence to fly through the water.

Competitive Squads

Starting with our Academy squads (Stage 6+), moving all the way through junior competitive squads to Senior Performance and the National squad. We cater to a wide range of abilities supporting the swimmers to reach their greatest potential, taking them to the top.

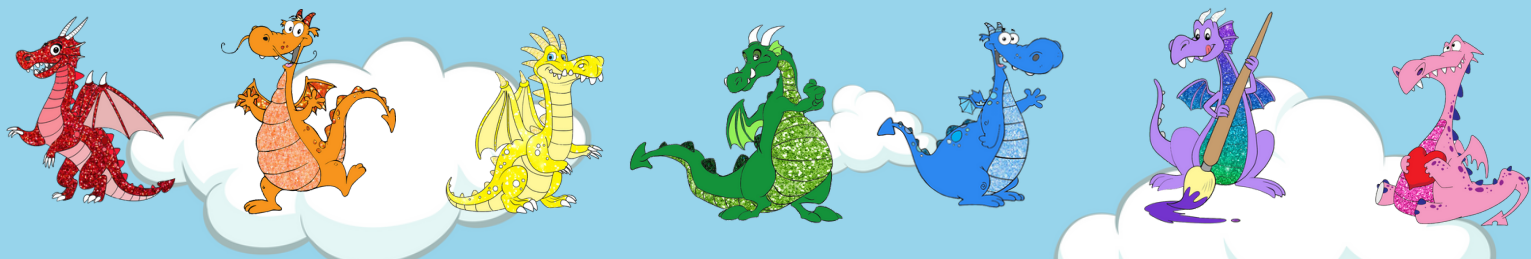
Development Squads

Our development pathway is our non-competitive pathway. Providing swimmers with good quality coached training for fitness.



pnscl_swimmingclub Portsmouth Northsea Swimming Club @PortsNorthseaSC








Infant Value Champions

| | | | | |
|----------------|-----------|----------------|-----------|----------------|
| Hedgehog Class | Archie | Resilience | Arabella | Creativity |
| Squirrel Class | Barnaby | Creativity | Emmanuel | Resilience |
| Rabbit Class | Leo | Resilience | Rose T | Teamwork |
| Fox Class | Ezinne | Independence | Subaha | Independence |
| Koala Class | Anaya | Independence | Alex | Challenge |
| Wombat Class | Ellie | Kindness | Moscow | Challenge |
| Emu Class | Blake | Independence | Jacub | Creativity |
| Dingo Class | Nayira | Responsibility | Finlay | Independence |
| Lion Class | Awwal | Challenge | Leo | Independence |
| Flamingo Class | | Challenge | | Responsibility |
| Giraffe Class | Aaliyah R | Resilience | Madison M | Independence |
| Zebra Class | Polat Ali | Kindness | Matilda L | Resilience |




Infant Attendance Awards

| | Best Class | Year Group |
|--------|------------|----------------------------------------------------------------------------------------------|
| Year R | Squirrels | Year R  |
| Year 1 | Emu | Year 1  |
| Year 2 | Flamingo | Year 2  |

Junior Value Champions

| | | | | |
|--------|----------|----------------|-----------|----------------|
| 3AB | Henry L | Creativity | Henry F | Creativity |
| 3HK/JC | Corby | Creativity | Isla C | Kindness |
| 3RW | Hama | Independence | Aliza | Independence |
| 3FL | Joshua | Independence | Zaynah | Creativity |
| 4ML | George V | Creativity | Daniel C | Challenge |
| 4CM | Ava | Creativity | Freddie | Resilience |
| 4HT | Meg | Kindness | Leo B | Responsibility |
| 4SS | Alice | Resilience | Farihan | Independence |
| 5KM | Carson | Teamwork | Willow | Teamwork |
| 5JB | Louie N | Resilience | Charlie H | Challenge |
| 5AC | Grayson | Creativity | Freija | Challenge |
| 5HW | Dollie | Teamwork | Jiho | Teamwork |
| 6TB | Archie F | Responsibility | Finn | Creativity |
| 6NC | Luke | Independence | Bahadir | Independence |
| 6BT | Teegan | Creativity | Sai | Resilience |
| 6AEW | Carson | Teamwork | Willow | Kindness |

Junior Attendance Awards

| | Best Class | Year Group |
|--------|------------|----------------------------------------------------------------------------------------------|
| Year 3 | 3AB | Year 6  |
| Year 4 | 4SS | |
| Year 5 | 5HW | Year 5  |
| Year 6 | 6BT | Year 4  |