


KING'S ACADEMY COLLEGE PARK



Reminders

Please don't forget to order your child's lunch for Junior Sports Day.
Please see below to choose your child's lunch order.



[Order lunch for Sports Day](#)



Attendance News

Our school target for attendance is 96%
 The classes that hit the target last week were:
 There were not many classes that reached 96% and above.

- RF-96.2%
 - 1K- 99.6%
 - 2L- 98.8%
 - 3HK- 98% 3FL- 97.8% 3RW- 97.8%
 - 4ML- 96.6%
 - 5JB- 96.10%
- Well done!

UPCOMING EVENTS

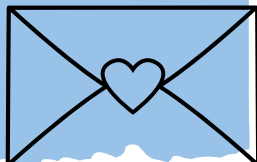
Mon 1st July	Transition Day
Tues 2nd July	Transition Day
Tues 2nd July	Big Picnic
Fri 5th July	International Day
Fri 5th July	Year R Messy Day

YEAR 2 LEAVERS FESTIVAL

Please can we have some small money donation for our Year 2 Leavers Festival.. We would love to be able to make this event the best it can be for our children, as a wonderful celebration to mark the end of Year 2.

Please hand the donation to the class teacher in an envelope.

Thank you, as always, for your continued support.



Year R Messy Day!

Thank you for being patient with us with regards to the messy day. We now have all the resources we need along with lovely sunshine. Therefore, we would like hold our messy day on Friday 5th July. Please can you bring in some messy clothes including shoes for your children for Friday. Please do not bring this in on Monday and Tuesday as your child will be in their new Year 1 classroom and we do not want the clothes to be lost.

Many thanks,
 The Year R Team



DON'T FORGET TO VISIT OUR WEBSITE FOR THE MOST UP TO DATE INFORMATION!

[Take me there!](#)

Follow
 -US-



Message from Mrs Carlyle



Dear Parents and Carers,

It was such a successful week last week and this week all the children are very excited about moving into their new class.

Last week on Friday there was an incredible creative energy in the School, we had the Crocodogopig workshop performance for Year 3, a Year 1 theatre workshop and Year 5 were having dance lessons.

The 'Infant Sports Day' showed great resilience and challenge with our younger children, it was so lovely to see all the parents enjoying watching the event too. It was a great success!! Thank you to Zuko sports and Mr William's for organising this very active morning. We also loved the music, thank you Mr Morey.

Have a lovely week,

Take care,
Mrs Carlyle



Outside Achievements



Leo and Elsie Kimber, Elsie Draper, Daisy Rae Vincent, Tommy and Beatrice Baker and Luella Aird have been working incredibly hard over the last 6 months with rehearsals for a show, especially last week where they were rehearsing everyday after school until the evening, alongside school work and grade work in dance. They all belong to Kelly Sheen School of Dance. They all took part in the show 'A celebration of children 2024'. Saturday and Sunday. All of them were amazing on the big stage and shone like the stars they are!

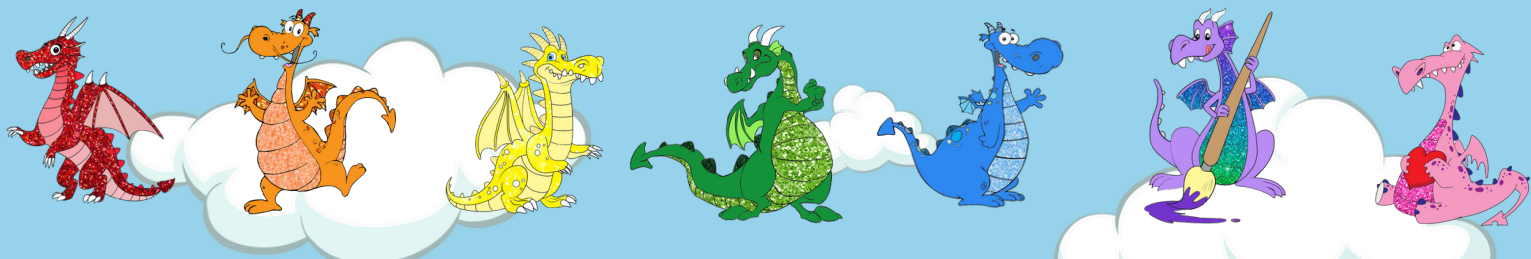
Please share your achievements to contact.cp@kingsacademies.uk



ASSEMBLIES






This week we will be focusing on 'Wimbledon' and next week is Friendship



Infant Value Champions

Hedgehog Class	Archie	Resilience	August	Challenge
Squirrel Class	Squirrel Class	Teamwork	Squirrel Class	Teamwork
Rabbit Class	Hugo	Creativity	Albert	Kindness
Fox Class	Noah	Kindness	Ezinne	Independence
Koala Class	Ebad	Teamwork	April	Resilience
Wombat Class	Aadiv	Challenge	George	Teamwork
Emu Class	Carter	Teamwork	Sophia	Resilience
Dingo Class	Dingo Class	Resilience	Jake	Responsibility
Lion Class	Emma	Kindness	Charlie	Challenge
Flamingo Class	Cerys	Creativity	Benett	Challenge
Giraffe Class	Mila	Creativity	Ronnie	Independence
Zebra Class	Polat	Kindness	Zebra Class	Teamwork



Infant Attendance Awards

	Best Class	Year Group
Year R	Fox	
Year 1	Koala	
Year 2	Lion	

Junior Value Champions

3RW	Matilda	Creativity	Effie	Kindness
3HC	Jude	Independence	Jennifer	Independence
3FL	Vinnie	Independence	Louie	Resilience
3AB	Gracie	Creativity	Sienna	Creativity
4ML	Ruby	Creativity	Christopher	Kindness
4CM	Oliver B	Independence	Chloe M	Independence
4HT	Gracie	Creativity	Emily L	Creativity
4SS	Amber	Kindness	Jett	Resilience
5KM	Danar	Independence	Jaden	Kindness
5JB	Pippa	Challenge	Willem	Responsibility
5AC	Thomas	Independence	Max	Resilience
5HW	Nancy	Responsibility	Jaiyen	Resilience
6TB	Oskar	Teamwork	Rex	Creativity
6NC	Daisy	Creativity	Fred	Resilience
6BT	Matvii	Kindness	Reginald	Kindness
6AEW	Josh	Creativity	Blake	Teamwork

Junior Attendance Awards

	Best Class	Year Group
Year 3	3HK	
Year 4	4ML	
Year 5	5JB	
Year 6	6CD	

Letters to Parents



Please click on the links below to read each letter

Whole School	
Year R	
Year 1	
Year 2	
Year 3	
Year 4	
Year 5	
Year 6	



Family First

"HERE'S YOUR **FREE** COPY OF THE UK'S LARGEST PARENTING TITLE - ENJOY!"

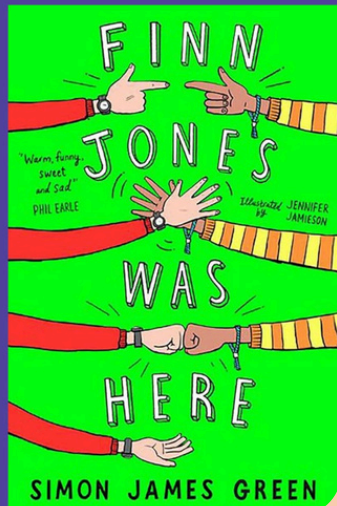


Kids Eat FREE this Summer | Interview with Bear Grylls | A Magical Trip to Dubai | Mumsnet Q&A | Plus More!

● READ AN ONLINE VERSION
● OF FAMILY FIRST MAGAZINE [HERE](#)

CALLING ALL YEAR 4 & 5 CHILDREN WHO MISSED OUT ON BUYING A BOOK FROM OUR AMAZING BOOK AWARDS WINNING AUTHOR SIMON JAMES GREEN.

SIMPLY SEND IN A NAMED ENVELOPE CONTAINING £7 TO MRS GASTON BY FRIDAY 5TH JULY



Price & Buckland

SCHOOLWEAR SINCE 1959

ORDER BEFORE THE 1ST AUGUST



Don't get caught in the August rush

Price & Buckland politely request that all school uniform orders are placed by the **1st August**.

This is to ensure delivery before the start of the new school year.

ORDER SCHOOL UNIFORM ONLINE

- Free Returns
- Free Delivery over £50

Our uniform is supplied by Price and Buckland, who have been manufacturing exceptional schoolwear since 1959. Visit the website below to shop for your school uniform.

Scan Me!



HOW TO ORDER

- 1 Visit the school finder by scanning the QR Code above or by visiting the Price and Buckland website.
- 2 Search for your school and select it from the list.
- 3 Browse the uniform range and add to basket.
- 4 Log in to your account or register as a new customer.
- 5 Complete your order by proceeding to payment and await your order confirmation email.

price-buckland.co.uk



Junior Sports Day Lunch

Please can your child pick their lunch by filling in the form for Sports Day.



Form closes on Thursday 4th July!

https://docs.google.com/forms/d/e/1FAIpQLScL5UXz9edc9Z78zxk8deTg4mbKd5wue29b3-dH99jxR3Zjuw/viewform?usp=sf_link

Sports Day Helpers

Please can we have some helpers for the Junior Sports Day, to walk children to and from Mountbatten Centre.

If you are able to help, please email: contact.cp@kingsacademies.uk

Thank you



DONATIONS NEEDED

CAN YOU SUPPORT OUR YEAR 6 PRODUCTION
BY DONATING ANY OF THE FOLLOWING:

- HAIRSPRAY
- FACE PAINT
- MAKE UP BRUSHES/SPONGES
- JUNGLE/LEAF/GREEN THEMED PARTY ACCESSORIES/DECORATIONS

THANK YOU IN ADVANCE FOR YOUR SUPPORT



 **KING'S ACADEMY
COLLEGE PARK**

COME & JOIN US FOR OUR

**SUMMER
FETE**

**SATURDAY, CROFTON ROAD
JULY 20TH PLAYGROUNDS**

10.00AM - 2.00PM

FREE ENTRY

Events

Raffle, sweet treats, Zuko Sports, Beach Dubbin,
games, crafts and more!

Tables still available!

Email contact.cp@kingsacademies.uk for
information

SUMMER FETE RAFFLE!

Raffle tickets £1 a strip.

These can be purchased on the day of our Summer Fete or in advance by sending money into School in an envelope clearly marked School raffle, with your Child's name, class and how many strips of tickets are required. Tickets will be returned to children in their classes.

Prizes include,

4 Tickets to
The Putt Hutt
Crazy Golf
Southsea

Family ticket to
D-Day Museum
Southsea

Movie
afternoon
For You and
Your class

Stagecoach
1 week Musical Theatre
Summer camp for 1 child

Dress down day
for You and Your
class

Extra
Playtime
For You and
Your class

TY Beanie Boo
Teddies

Pet Photography Vouchers
@ pawandclawphotography

'Little Seeds'
Baby Bundle

TempleSpa
Gift sets

Bespoke
biscuits

Art Packs

& other small prizes!

Do you own a business, know anyone that owns a business or work for a company that could donate an item or voucher to the School for our Raffle?

Any donations would be greatly appreciated. Headed letters can be created for donations if required.

Thank you in advance.

Holiday Clubs



PORTSMOUTH SUMMER FOOTBALL CAMP

AT: TRAFALGAR SCHOOL
LONDON ROAD, HILSEA, PORTSMOUTH, PO2 9RJ

HELD ON MONDAY 29TH JULY TO FRIDAY 2ND AUGUST 2024, 10AM – 3PM
FOR BOYS AND GIRLS AGED 4 – 14

WE HAVE BEEN RUNNING OUR FOOTBALL CAMPS AND COURSES IN YOUR COMMUNITY FOR OVER 23 YEARS!

Exciting news! We are running our annual Summer Camp on Monday 29th July to Friday 2nd August 2024.

- The Camp is for 5 days from 10am-3pm, free drop off from 9:15am! Lunch is 12.15pm-1pm, children must bring their own packed lunch and plenty of drinks.
- The camp is held on grass football pitches, therefore children may wear trainers or moulded sole plastic studs. We also have the use of indoor facilities.
- On Friday at 2.15pm we hold a presentation, whereby **EACH CHILD WILL RECEIVE AN ENGRAVED TROPHY** as well as many opportunities to win extra trophies, including the World Cup Tournament, penalty shoot out competition, skill point winners and player of the camp.
- The camp is run by FA qualified coaches, who are DBS checked and are currently working with children in schools daily, enabling them to learn essential football techniques, building **CONFIDENCE**, improving **FITNESS** and providing the most important ingredient of all 'FUN'!
- The cost of the 5 day camp is £100 per child (£75 for additional brothers and sisters). £30 daily rate.

There will be consent forms to complete on arrival and payment should be made on the first morning of the camp.

Mark Frith (course co-ordinator)

www.soccercoachlink.co.uk

TO RESERVE SUMMER CAMP PLACES

PLEASE TEXT:

PORTSMOUTH SUMMER CAMP + CHILD'S FULL NAME + AGE
and receive confirmation by text to:-
07827 322 780



China & South Africa
Governor Globetrotter is back at New Horizons Primary School (PO2 7JB) this summer, visiting two new countries! Join us for one or more days: 29th July - 9th August. Please call 02392 983505 or email anne@magicalholidaycamps.com to book. www.magicalholidaycamps.com



Early Bird Prices (until 14 t h July)

	Day Rate	Full Week
Full day: 9am - 3pm	£26.10 £24.80 per child for siblings	£123.98 £117.75 per child for siblings
Add on hour: 3pm - 4pm or 4pm - 5pm	£5.40	£25.65

Standard Prices (bookings after 14 t h July)

	Day Rate	Full Week
Full day: 9am - 3pm	£29 £27.00 per child for siblings	£137.75 £130.00 per child for siblings
Add on hour: 3pm - 4pm or 4pm - 5pm	£6	£28.50



Portsmouth Leisure Card

With the summer holidays approaching, check to see if you could be entitled to a Portsmouth Leisure Card.

It offers discounts of up to 50% at some Portsmouth City Council facilities as well as other services and attractions.

The Card is free and available to those who receive **means-tested benefits** living within PO1 – PO6 areas of the city. (and some properties in PO7 qualify where these pay council tax to Portsmouth City Council).

You can enjoy BH Live sports centres, swimming pools, golf, museums, city arts, Portsmouth Historic Dockyard, Southsea Skatepark, the Andrew Simpson Centre, discount on beach hut rental and allotments and much more. Please note discounts do vary, and a complete listing will be sent with your Leisure Card.

The Leisure Card is valid for 12 months and you can reapply when the card expires, if still eligible.

How to apply: visit the Portsmouth City Council website, search for Leisure Card and apply online www.portsmouth.gov.uk or you can visit your local library, community centre or housing office and ask for an application form (please bring along proof of the benefits to be checked)

If you have any questions, then please do call 02392 688797 or email CulturalServices@portsmouthcc.gov.uk

Eligible benefits.

- Universal credit
- Income support
- Income-based jobseeker's allowance (JSA)
- Income-related employment and support allowance (ESA)
- Working tax credit
- Housing benefit
- Council Tax Support (excludes statutory 25% single persons discount)
- Pension credit (guarantee credit element only)
- Foster carers with foster children (use the online application form and upload a signed letter from your supervising social worker as evidence)
- Asylum Seekers – Please note you will be asked to reference your Home Office Number supplied by Portsmouth City of Sanctuary

Active8 Minds[®] SUMMER HOLIDAY CLUB

Sport & childcare specialists

SPORTS ZONE | ACTION ZONE | CHILL ZONE | ART AND CRAFTS



AGES YEAR 1 - YEAR 7
PRICES FROM £23
SIBLING DISCOUNT AVAILABLE
8AM - 5PM

HAF FUNDING AVAILABLE

TPS
WARBLINGTON
EMSWORTH PRIMARY
HIGHBURY
ST PETERS
WIGOR
MEON
HORIZON HAVANT



01243 696580

bookings@active8minds.co.uk
www.active8minds.co.uk

Ofsted Registered
Friendly & Qualified Staff
Staff DBS
Safeguarding & First Aid Trained
Childcare Vouchers Accepted

What Parents & Educators Need to Know about

GAMBLING

Gambling can be defined as betting or risking money or something of value on the outcome of a situation involving chance. Under current regulations, gambling is legal for adults in the UK. Its potential impacts on the wellbeing of individuals, families and communities are well documented – emphasising the importance of safeguarding children and young people against these hazards.

WHAT ARE THE RISKS?

MANIPULATIVE ADVERTISING

Adverts for online bookmakers and betting exchanges can raise concerns about targeting vulnerable groups, fostering addiction, promoting misleading expectations, impacting mental health, affecting social norms, posing regulatory challenges, influencing minors and other ethical issues. Effective regulation, responsible advertising practices and public education are essential to mitigate these concerns and address the potential harms associated with excessive exposure to manipulative advertisements.

FREE BET!!

ADDICTIVE FEATURES

All gambling products carry safety concerns, but some can be even riskier and more addictive. The frequency with which people can place bets can encourage them to do so often – with rapid spins and multiple betting options, for example. Betting on sports events, especially with live in-play betting options, can be highly engaging and habit forming. The 24/7 availability of online platforms can also increase the risk of excessive gambling, particularly among young people.

PEER PRESSURE

Exposure to gambling through friends, influencers or social circles can normalise risky behaviour and create unrealistic expectations about the chances of winning. Addressing peer influence requires support services, responsible advertising practices and effective education on the subject to minimise the impact on children and promote healthier choices.

IMPACT ON MENTAL HEALTH

Gambling can exacerbate mental health issues such as anxiety, depression, and stress – especially if it leads to financial loss. Individuals with existing mental health conditions may use gambling as a coping mechanism – but the cycle of gambling can worsen their symptoms, creating a detrimental impact on overall wellbeing. Integrated support services and treatment options are crucial to address these interconnected challenges effectively.

GATEWAY BEHAVIOURS

Certain features of other products – such as video games that offer in-game purchases – can lead to gambling among young people. These mechanisms can sometimes be designed to exploit psychological vulnerabilities, encouraging repeated spending to acquire virtual items or advantages. Such practices can normalise the associated risks and desensitise young people to putting their or their family's money in danger.

FINANCIAL DIFFICULTIES

The most common impacts of online betting come in the form of financial losses and debt. This, in turn, can lead to distorted perceptions of money, deterioration of relationships, social isolation, and poor academic and career outcomes. Regular gambling can even exacerbate other risky behaviour by making it seem less significant – potentially leading to a cascade of health impacts and financial loss.

Advice for Parents & Educators

ENCOURAGE OPEN DISCUSSIONS

Sporting events can be a good opening for conversations about gambling, as some sponsorships may reference and even glamourise it. Talk to children about how these promotions make them feel and encourage frequent conversations about any concerns they may have. Adverts, influencers and online platforms may also feature gambling products. As a child grows, it's important to encourage their critical thinking skills to help them avoid being manipulated by this type of marketing.

KNOW THE WARNING SIGNS

Parents and educators should be vigilant for signs of gambling harm among young people. Look for changes in their behaviour such as increased secrecy, unexplained money issues, mood swings or withdrawal from their usual activities. Open conversations about gambling risks and maintain a supportive, non-judgemental environment. Try to familiarise yourself with resources and helplines for assistance and guidance.

MONITOR SPENDING

In-game purchases can be appealing to children, allowing them to unlock new features or cosmetic items in a fraction of the time it would take to win them by playing. Talk to children about how they spend money online; an interest in what video games they play can encourage the conversation. Consider setting up restrictions on their devices, requiring their parent or carer's permission before making any purchases. Talk about finances regularly and openly.

GET FURTHER SUPPORT

Support and treatment for young people is available via the Young People's Support Service at GamCare, who can be contacted at 0808 8020 133. A link to their website has also been included in the sources of this guide, along with links to several other support networks. Your GP and local NHS gambling clinic are also available if you require additional advice. Don't hesitate to reach out for help if you're concerned about a child's gambling behaviour or their financial situation.

Meet Our Expert

Ygam's mission is to prevent children and young people from experiencing gaming and gambling harms through awareness raising, education, and research. The charity was established in 2014 as a result of the lived experience of their founders.



The National College®

Source: See full reference list on guide page at: <https://nationalcollege.com/guides/gambling>

@wake_up_weds

/www.thenationalcollege

@wake.up.wednesday

@wake.up.weds

Users of this guide do so at their own discretion. No liability is entered into. Current as of the date of release: 26.06.2024