



King's Academy College Park

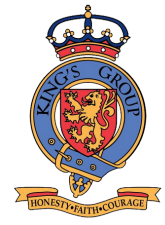
School Information Booklet



King's Academy College Park
Crofton Road
Portsmouth
PO2 0NT

Telephone: 02392 663 645
Email: contact.cp@kingsacademies.uk
Website: www.kgacollegepark.uk





King's Academy College Park

King's Academy College Park is a large, four form entry school on the outskirts of Portsmouth. We are proud to be part of the King's Group Academies Trust and enjoy the benefits of being part of a multi-academy trust brings, whilst maintaining close working relationships with the Portsmouth local authority.

Our inclusive school is driven by its values of teamwork, resilience, responsibility, independence, creativity, challenge and kindness, and we are proud of how these values shape our pupils into valued young citizens in the local community. Our curriculum is ambitious and supports our pupils to share our MAT vision of 'Opportunity and success on a global stage'.

Opportunity and Success on a Global Stage

As part of the trust, we have a shared vision for our pupils to develop into global citizens, and have recently been awarded a Foundation Level International Schools Award for the work we have carried out. This has included international celebrations and a partnership with an international school.

Every pupil at KACP will have:

- Our confidence in their ability to achieve beyond expectations, irrespective of their background or starting point
- Full involvement with their families in shaping their education
- The right to be safe, happy and be their authentic self, irrespective of race, religion, and identity
- The opportunity to learn a language, develop a global outlook and build connections
- High quality, research-based teaching delivered through an innovative blend of technology and staff who are passionate about our pupils' success

You can find more about KGA on their [website](#).





Our School Values



Resilience



Responsibility



Independence



Challenge



Teamwork



Creativity



Kindness

King's Academy College Park is proud to be a United Against Bullying Silver School for 2024



ANTI-BULLYING ALLIANCE
UNITED AGAINST BULLYING

This certifies that:

King's Academy College Park

is a United Against Bullying Silver School and has demonstrated its commitment to stopping bullying and improving the wellbeing of its pupils.

Signed: 

Date: **March 2024**

NATIONAL CHILDREN'S BUREAU
Part of the family



UNITED AGAINST BULLYING

SILVER SCHOOL 2024

Funded by

Department for Education





Behaviour Expectations

The school's behaviour expectations are embodied by The KACP Way which promotes the school culture:



A set of behaviour curriculum statements sit underneath this and set out what pupils are expected to do. These link to our school values.

Pupils are expected to:

- Accept when things do not go their way and respond appropriately.
- Conduct themselves in a sensible manner when moving around the school and treat resources with respect.
- Come to school prepared and ready to learn.
- Contribute to lessons and try their best at all times.
- Create an environment that makes it possible for everyone to be successful.
- Maintain a high behaviour standard in new and different situations.
- Be respectful and kind to others through their actions and words.

Pupils are rewarded for displaying teamwork, resilience, responsibility, independence, creativity, challenge and kindness in their day to day school life. Pupils can achieve bronze, silver and gold behaviour certificates, as well as weekly rewards for role modelling the school values.

There are consequences for pupils who choose not to follow our high expectation, and we will contact parents in the case of any serious incidents.

We use [Class Charts](#) to communicate information about behaviour to parents.





Attendance

**MOMENTS
MATTER,
ATTENDANCE
COUNTS.**

Our school target for attendance is 96%.

The link between attendance and attainment is clear:

- In 2018/19, just 40% of persistently absent (PA) children in KS2 achieved expected KS2 standards, compared with 84% of pupils who regularly attended school.
- 36% of PA children in KS4 got 9 to 4 in their English and maths GCSEs, compared with 84% of regular attenders.

And it's never too late to benefit from good attendance:

- More than half (54%) of pupils who were PA in Year 10 and then rarely absent in Year 11, passed at least 5 GCSEs, compared to 36% of pupils who were persistently absent in both years. But attendance is important for more than just attainment: Regular school attendance can facilitate positive peer relationships, which is a protective factor for mental health and wellbeing
- Attendance in the first week of school in September sets up attendance throughout the year
- Evidence from a Children's Commissioner report showed that children who miss one of the first few days of the new term for unauthorised reasons are much more likely to miss long periods of their schooling than their peers who attended those first few days. These children had a predicted overall absence of almost 45%, or 31 days across the term.
- In the 2022/23 academic year, of those who had at least one day of absence in the first week of term, 55.5% went on to be persistently absent.

IF YOUR CHILD IS FEELING UNDER THE WEATHER,
IT CAN BE HARD TO KNOW IF YOU SHOULD SEND THEM TO SCHOOL OR NOT.

UNLESS THEY HAVE A TEMPERATURE OF 38 DEGREES OR ABOVE, THEY'RE USUALLY GOOD TO GO.

SEARCH NHS SCHOOL ILLNESS GUIDANCE.

**MOMENTS
MATTER,
ATTENDANCE
COUNTS.**

HM Government **NHS**

SCHOOL DAYS ARE PACKED WITH MOMENTS OF...

CURIOSITY, WONDER AND CONNECTION.

SEARCH 'ATTENDANCE' ON THE EDUCATION HUB

**MOMENTS
MATTER,
ATTENDANCE
COUNTS.**

HM Government **NHS**





Attendance & School timings

Appointments

If your child has to be absent from school to attend an appointment (doctor, dentist, hospital, etc.) the school office will need to see proof of the appointment. This could be a letter, appointment card, text or email.



Reporting an Absence



If a pupil is not able to be in school because they are unwell we must be notified by 9.00am on the first day of absence, otherwise this can become a safeguarding issue.

You can use the Studybugs app to report the illness or telephone the school office on 02392 663645, to leave a message on the absence line.

If we do not hear from you, we will attempt to make contact and in certain circumstances we may visit your home, contact the police or social services.

To take advantage of the Studybug app, (once your child has started at the school) please search and download the free Studybugs app, or register on the [Studybugs website](#).



For more information please see our attendance policy which can be found on our [website](#).



School Times

Start of the day:

Infant School		Junior School	
8.30am	Gates open	8.30am	Gates & doors open
8.35am	Doors open	8.50am	Registration & gates locked
8.55am	Registration & gates closed		

End of the day:

Infant School		Junior School	
3.00pm	Gates open	3.00pm	Gates open
3.15pm	End of the school day	3.10pm	End of the school day
3.25pm	Gates locked – please collect your child from the office	3.20pm	Gates locked – please collect your child from the office



King's Academy College Park

2024 - 2025 School Calendar



August '24						
Su	M	Tu	W	Th	F	S
				1	2	3
4	5	6	7	8	9	10
11	12	13	14	15	16	17
18	19	20	21	22	23	24
25	26	27	28	29	30	31

September '24						
Su	M	Tu	W	Th	F	S
1	2	3	4	5	6	7
8	9	10	11	12	13	14
15	16	17	18	19	20	21
22	23	24	25	26	27	28
29	30					

October '24						
Su	M	Tu	W	Th	F	S
		1	2	3	4	5
6	7	8	9	10	11	12
13	14	15	16	17	18	19
20	21	22	23	24	25	26
27	28	29	30	31		

November '24						
Su	M	Tu	W	Th	F	S
					1	2
3	4	5	6	7	8	9
10	11	12	13	14	15	16
17	18	19	20	21	22	23
24	25	26	27	28	29	30

December '24						
Su	M	Tu	W	Th	F	S
1	2	3	4	5	6	7
8	9	10	11	12	13	14
15	16	17	18	19	20	21
22	23	24	25	26	27	28
29	30	31				

January '25						
Su	M	Tu	W	Th	F	S
			1	2	3	4
5	6	7	8	9	10	11
12	13	14	15	16	17	18
19	20	21	22	23	24	25
26	27	28	29	30	31	

February '25						
Su	M	Tu	W	Th	F	S
						1
2	3	4	5	6	7	8
9	10	11	12	13	14	15
16	17	18	19	20	21	22
23	24	25	26	27	28	

March '25						
Su	M	Tu	W	Th	F	S
						1
2	3	4	5	6	7	8
9	10	11	12	13	14	15
16	17	18	19	20	21	22
23	24	25	26	27	28	29
30	31					



April '25						
Su	M	Tu	W	Th	F	S
		1	2	3	4	5
6	7	8	9	10	11	12
13	14	15	16	17	18	19
20	21	22	23	24	25	26
27	28	29	30			

May '25						
Su	M	Tu	W	Th	F	S
				1	2	3
4	5	6	7	8	9	10
11	12	13	14	15	16	17
18	19	20	21	22	23	24
25	26	27	28	29	30	31

June '25						
Su	M	Tu	W	Th	F	S
1	2	3	4	5	6	7
8	9	10	11	12	13	14
15	16	17	18	19	20	21
22	23	24	25	26	27	28
29	30					

July '25						
Su	M	Tu	W	Th	F	S
		1	2	3	4	5
6	7	8	9	10	11	12
13	14	15	16	17	18	19
20	21	22	23	24	25	26
27	28	29	30	31		

 School Closed
 Bank Holiday

 Inset Day
 First/Last day of academic year



School Uniform

At King's Academy College Park, we believe the school uniform achieves many important goals but most importantly:

- It encourages a sense of community identity and pride by wearing the same badge and the same clothing, pupils feel a true sense of belonging
- Uniforms allow schools to have a distinct style that everyone in their community can recognise and appreciate
- It encourages our pupils to develop habits by learning to take responsibility for their belongings, pupils learn the habits of discipline and personal responsibility that will stay with them for life.

It is incredibly important to us for the uniform to act as a social leveller, which is why we are asking for no branding/logos (e.g. Nike, Adidas etc) on items of clothing worn into school. These items should be reserved for wearing outside of the school.

As you can imagine, for a school of our size, labelling of all clothing is vital.

Uniform:

- Branded navy blue jumper or cardigan
- Additional navy blue jumper or cardigans can also be purchased
- Gold or yellow polo shirt
- Black trousers, shorts, skirt or pinafore dress
- Gold or yellow gingham dress
- Smart black footwear without obvious/coloured logos
- Plain navy blue book bag

PE Kit:

- Plain gold or yellow t-shirt
- Black shorts without obvious/coloured logos
- Black jogging bottoms without obvious/coloured logos (for colder weather)
- Black jumper without obvious/coloured logos (for colder weather)
- Black trainers without obvious/coloured logos
- Plain navy blue PE bag

Branded items can only be purchased from one of our uniform suppliers, Hargreaves or Price and Buckland.



Price & Buckland

All other items can be purchased from supermarkets and other clothing shops.

Click a logo
to see the range





Uniform



Parents will be contacted if their child does not come to school in the correct uniform.

School PE Kit:



Please note: On your child's PE day, please remove their earrings before they come to school. If this isn't possible, then they must be taped by you before they arrive to school. This is to ensure your child can take part in PE safely. Your child must also have a hair band to tie their hair up when taking part in PE lessons.

If a pupil does not have the correct PE kit they will not be able to take part in PE lessons.

Further information about uniform can be found on our [website](#).





Travelling to school

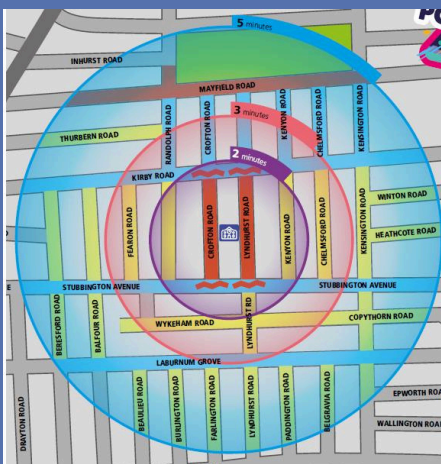
We understand that there are many reasons why parents need to drive to drop off and pick up their children from school, however we are working with Portsmouth City Council to strengthen other ways of getting your child to and from school.

SCOOTABILITY™

Pupils in Year 2 and Year 4 take part in Scootability, a nationwide scooter training programme. It gives pupils the skills and knowledge to ride safely.



There are school crossing patrol officers at the junctions of Lyndhurst Road where it meets Kirby Road and Stubbington Avenue.



Finally – parents who drive are asked to refrain from idling. Did you know that an engine left running creates enough emissions to fill 150 balloons with harmful pollutants every minute?



Pupils in Year 6 have the opportunity to take part in Bikeability, the government's national cycle training programme. It helps pupils to learn practical skills and understand how to cycle on today's roads.

There are lots of scooter and bike racks in the playgrounds where pupils can safely store their bikes and scooters whilst at school.



Is it illegal to park on zig-zag lines outside schools?

Yes, it's always illegal to park on yellow zig-zag lines anywhere. Rule 243 of the Highway Code indicates a range of places where motorists must not park, including on a bend, a dropped kerb or the brow of a hill. It also states that drivers must not park near a school entrance, anywhere that would prevent access for emergency services or near a bus stop, tram stop or taxi rank.

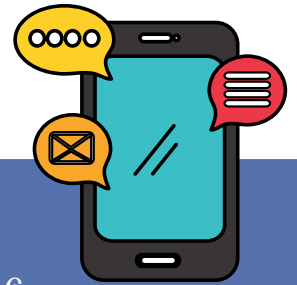
Parking outside a school specifically may obstruct visibility for parents and children trying to cross the road and is highly dangerous.

In 2022 the school ran a trial of School Streets, where parents were asked to avoid Lyndhurst Road and Crofton Road when collecting and dropping off – you can still use the parking map to the left to help you find other locations to park during busy periods.





Mobile Phones



Pupils:

Pupils are permitted to bring a mobile phone to school if they are in Years 5 or 6 in line with the circumstances below:

- They are travelling to or from school by themselves
- They are a young carer who needs to be contactable
- They have written permission from their parent or carer agreeing to the school's code of conduct.

Phones are not permitted to be used by pupils when on the school site. When pupils enter the school site, i.e. the school playground, their mobile phone must be turned off and handed over to a member of staff for secure storage.

Pupils must adhere to the school's code of conduct for mobile phone use.

The use of smart watches is prohibited and they must not be worn to school. If they are worn they will be confiscated and stored in the school office until the end of the day.

An online consent form will be shared with parents when their child begins Year 5 and Year 6.

Parents:

Parents, must:

- Not take pictures or recordings of pupils, unless it's a public event, or of their own child
- Use any photographs or recordings for personal use only, and not posting on social media without consent
- Use the school office as the first point of contact if they need to get in touch with their child during the school day. They must not try to contact their child on their personal mobile during the school day.

Safeguarding & Online Safety:

Ensuring the safety of our pupils is our highest priority, and unfortunately the use of mobile technology is one of the biggest issues facing our pupils.

We urge parents to consider carefully the use of social media apps by their child and the impact this can have on their child's mental health.



If a concern is brought our attention regarding the use of social media by our pupils and messaging apps, we expect parents to support us by taking action to prevent further incidents.





School Lunches

Our school dinners comprise of meat, vegetarian and vegan mains, salad bar, a healthy dessert and unlimited water. All our recipes are low salt and low sugar and strive to incorporate a substantial portion of fruit and vegetables. The menus change twice a year and our in house kitchen staff (Caterlink) love to include pupil feedback in their food making.



School dinners for paying junior school children cost £2.68 for the 2024/2025 academic year.

Packed Lunches

Packed lunches from home must be healthy and contain no products with nuts. Sandwiches or items that appear to contain chocolate spread will not be permitted as we cannot guarantee they will be nut free.

NHS guidelines suggest that a balanced lunchbox will contain something from each of the following groups:

- a starchy food such as bread, pasta or rice
- a protein source such as meat, fish, egg or beans
- a source of calcium such as yoghurt, cheese or milk
- fresh vegetables or salad
- fruit (including fresh fruit juice and dried fruit).



Breaktime Snacks

Infant school pupils get free fruit and vegetables for their breaktime snacks.

In the junior school, it is advisable that pupils bring a healthy snack to help break up the day and maintain energy levels. These must be sent in their school bag and NOT in their lunchboxes. This could be fresh or dried fruit, low sugar cereal bars or other healthy options. Pupils will not be permitted to have chocolate bars or crisps. If your child comes to school with a snack that does not meet the criteria, you will be notified by the school.



Please ensure your child brings a water bottle to school every day.





Free School Meals

Your child may be entitled for free school meals if you are currently in receipt of any of the following:

- Income Support
- Income-based Jobseekers Allowance
- Income-related Employment and Support Allowance
- Support under Part VI of the Immigration and Asylum Act 1999
- The guaranteed element of State Pension Credit
- Child Tax Credit only, provided your annual household income (as assessed by HM Revenue & Customs) does not exceed £16,190. Anyone entitled to Working Tax Credits not entitled to free meals regardless of income
- Working Tax Credit run-on-paid for 4 weeks after you stop qualifying for Working Tax Credit
- Universal Credit, if your earned income was £616.67 or less in your last monthly assessment period, or less than an average of £616.67 a month over the last 2 or 3 monthly assessment periods.

If you think you are eligible, please apply online at
<https://portsmouth.cloud.servelec-synergy.com/SynergyWeb/FSM.aspx>

All pupils in Reception, Year 1 and Year 2 in state-funded schools in England will receive free school meals regardless of eligibility. If your child is eligible for free school meals, they'll also qualify for the Holiday Activity and Food Programme. Food vouchers may also be available through the Household Support Fund. Additional benefits will be allocated to families who are in receipt of free school meals, so it is always worth checking to see if you are eligible and applying.

WE ARE A NUT FREE SCHOOL!



People who suffer from nut allergies can develop a severe, potentially life-threatening allergic reaction. If someone has a nut allergy it is not just eating nuts that can cause a severe reaction, just being touched on the skin or smelling the breath of someone who has had nuts or a product containing nuts can trigger anaphylactic shock (which can cause breathing and swallowing difficulties).



Greggs Foundation Breakfast Club

As a school we are fortunate to be able to offer a free breakfast club for children of families who are in receipt of free school meals.

The benefits of attending a breakfast club:

- Children have improved health and nutrition.
- Children have improved attendance and punctuality.
- Children are able to socialise and make friends.
- Children have better relations with school staff.
- Parents are less wary of school and are more likely to attend parents evenings.
- Children are able to concentrate better and results are improved.



The breakfast club runs from 8am each morning where they can choose from a selection of cereals, toast & toppings, fruit and yoghurts for pupils to choose from. When pupils have finished eating their breakfast, they can play board games or relax and chat with their friends. All pupils who attend will then be sent to their classes at their start time, ready to begin their school day.

This scheme will be supervised by volunteers and our Senior Leadership team. We are always on the lookout for parent volunteers.

The Greggs Foundation encourages the use of parent volunteers in breakfast club. Research has shown the clubs create opportunities to volunteer, helping inactive adults become work ready. Breakfast Clubs also help to build relationships, both between pupils who enjoy socialising over a meal, and between the school and the parents benefiting from the extra support.

Should you wish for your child to attend, please speak to a member of staff in the school office who can provide you with an application form.

Please note: Even though pupils in the infant school receive free school meals, this does not mean they qualify for free school meal status.





Communication

Website

Our school [website](#) is regularly updated and has all the information you need on a day to day basis. This includes term dates, curriculum information, and all of our policies. Each year group has its own page where teachers post termly updates about what your child has been learning, homework and weekly spellings.

Social Media

The school has a dedicated Facebook page and Instagram account that you can follow for updates, reminders and photos captured of school life.



Newsletter

Mrs Carlyle's newsletter is sent out on ParentMail each half term. This celebrates achievements, our school life and gives updates about future events.

ParentMail

IRIS ParentMail is the main way we send information to families. This will include letters, reminders and any urgent notices.



Class Charts

We use Class Charts to send you updates about your child's behaviour.



Contact us

Members of the school leadership team are on the gates at the start and end of each day and are always happy to pass on information to other members of staff.

Parents can contact the school by either telephoning the school office on 02392663645 or by email at contact.cp@kingsacademies.uk.

Please ensure you have checked all communication channels before contacting the office with an enquiry.

We politely ask parents not to send emails to staff members' individual email addresses. All emails must go through the main office email address.





Kid's Club

We can offer wraparound care for your child/ren if you are unable to drop off/pick up your child from school at the normal times.



Telephone: 02392 663645

(Opt 1 for Kid's Club admin and enquiries)

(Opt 3 for emergencies outside of school hours)

Email: contact.cp@kingsacademies.uk

URN 144506

Please ask for an information booklet if you are in need of wraparound care for your child.



